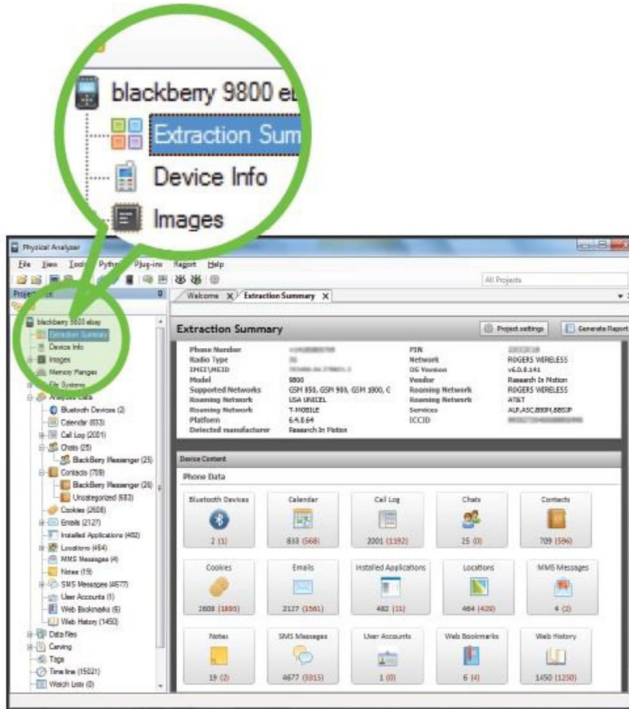


UFED Touch Ultimate

Advanced Mobile Forensic Solution



Portable all-in-one tool with touch screen for field or lab investigation



- ✓ Physical Extraction
- ✓ Password Extraction
- ✓ File System Extraction

of **HIDDEN** and **DELETED** data



Extraction

Obtain existing and deleted data including **apps**, **passwords**, **emails**, **call history**, **SMS**, **contacts**, **calendar**, **media files**, **geotags**, **location information**, **GPS fixes** etc.



Decoding

Decode a rich set of data with capabilities of JTAG decoding, highlighting parsed content in the Hex, running Python scripts via plugins etc.



Analysis

Advanced analysis capabilities including **malware detection**, **communication and relationship analysis**, **timeline view**, **text view**, **location view**, **image carving**, **watch list**, **Hex view**, **exporting locations and emails**, **SQLite databases view** and more.

Data Recovery

Data Erasure

Data Destruction

Digital Forensics



TECHNOLOGY MAKES POSSIBILITY

Device Supporting

- ✓ Supports **3,700+** models and keeps updated for compatibility with new phones Including legacy and feature phones, smartphones, portable GPS devices, tablets, memory cards and phones manufactured with Chinese chipsets
- ✓ Widest support for **Apple devices** running iOS3+
- ✓ The most powerful solution for phones with **Chinese chipsets**



UFED Chinex

An add-on for physical and password extraction from phones manufactured with **Chinese chipsets**.



Reporting

Generate and **customize** reports in different formats such as PDF, HTML, XML and Excel.



UFED Reader

Share results with authorized personnel without need for UFED software license or installation.



Phone Detective

- ✓ Quickly **identify a mobile** by its physical attributes
- ✓ Search from a database of **4,000** phones
- ✓ Available as an **app** for iOS and Android

All-inclusive Kit

- ✓ **Proprietary** technology and boot loader ensure **forensically** sound extraction
- ✓ **Touch** screen and **intuitive** user interface
- ✓ Mission-ready **all-inclusive kit** for field or lab investigations
- ✓ **Proprietary** hardware with integrated battery



Trusted Solution

- ✓ **30,000** units deployed across **100** countries
- ✓ **Primary** choice for forensic specialists in law enforcement, military, intelligence, corporate security and e-Discovery

